

Waltly Frame Price Inquiry



Thank you for your interest in Waltly titanium frames.

Please fill in as much information as you can on this form, then save the file and email to sales@waltlyti.com. We will contact you with a CAD drawing and a price quote as soon as possible.

Any specifications you are unsure of can be left blank. If you are unsure about tubing diameter, shape or wall thickness, we can select it for you based on your weight and frame size, optimized for your performance and comfort.

Include any additional requests and details in the body of the email.

Rider Information:

Name: _____

Weight: _____ kg

Email address: _____

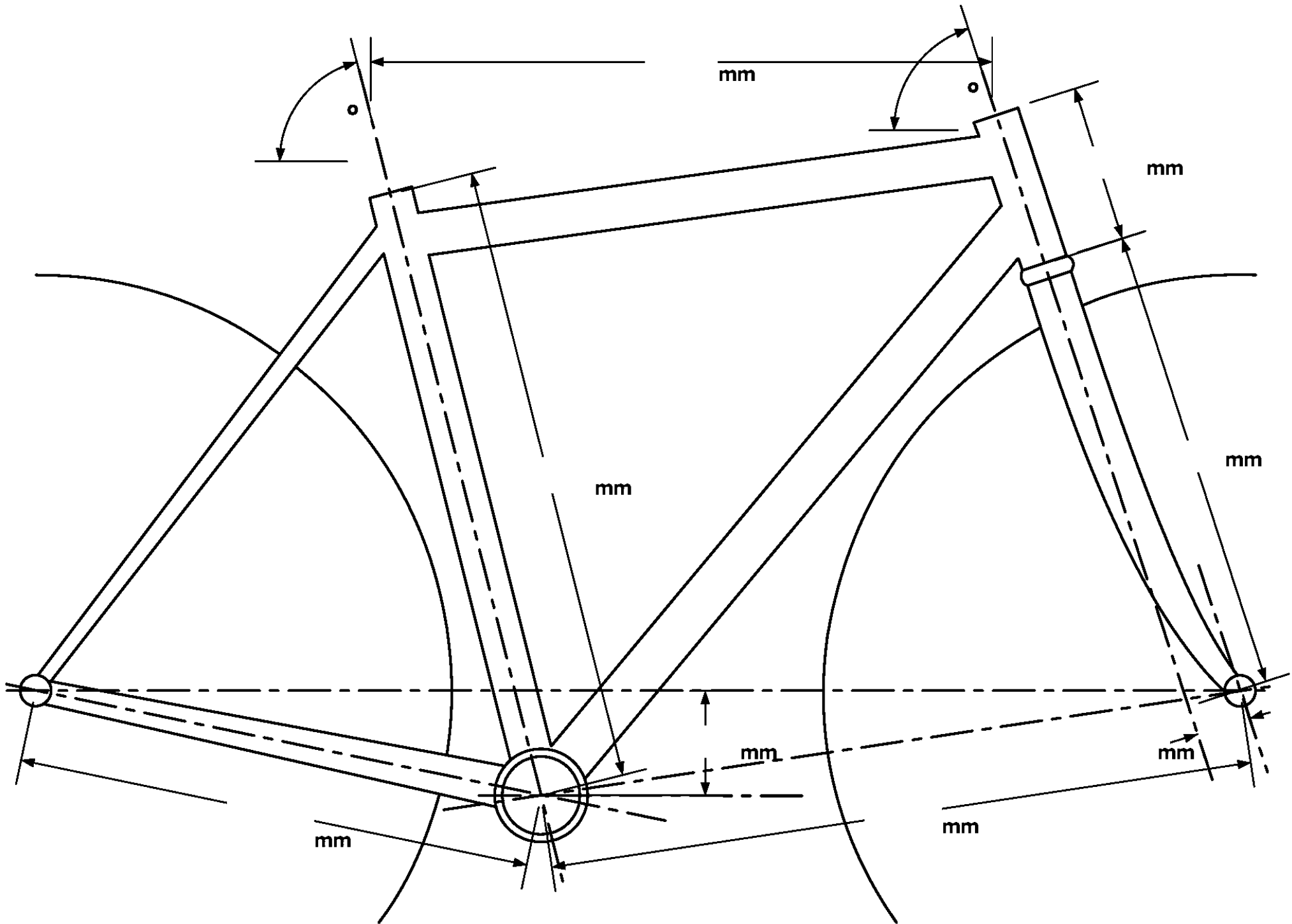
Country: _____ Postal code: _____
(for shipping calculation)

WHY WE DO NOT ASK FOR BODY DIMENSIONS

We are a frame manufacturer and cannot provide in-person fitting services. Body dimensions can only provide rough guidelines for a frame. Other factors such as bicycle type (racing, touring, road, off-road, etc.), riding style, posture and joint flexibility also influence frame geometry. Two people with exactly the same body dimensions may need very different frames if one prefers to be more upright than the other. A rider may even prefer different frame geometries in different years as age, strength and flexibility change.

We strongly suggest that you get a professional fitting from a bike shop with the proper expertise and equipment. However, even that is not the final word on fitting. No formula can take the place of real world sensations. The best way to get a good fit is to copy the geometry of a bike that you are very comfortable on and satisfied with.

FRAME GEOMETRY



FRAME TYPE:

HEAD TUBE:

TOP TUBE:

DOWN TUBE:

SEAT TUBE:

SEAT STAYS:

CHAIN STAYS:

BOTTOM BRACKET:

ISCG 03/05 tab

DROPOUTS

Derailleur hanger

Split seat stay with coupler (for Gates CenterTrack belt drive system)

FRAME FINISH:

CUSTOM LOGO (to be supplied later)

WHEEL DETAILS

Rim size:

Maximum tire width:

Rear axle width:

Rear axle type:

ADDITIONAL OPTIONS

Kickstand mount:

Water bottle bosses:

Down tube top

Down tube underside

Seat tube

Rack eyelets

Fender eyelets

BRAKE TYPE:

REAR BRAKE CABLE ROUTING (front triangle):

REAR BRAKE CABLE ROUTING (rear triangle):

DERAILLEUR CABLE ROUTING (front triangle):

DERAILLEUR CABLE ROUTING (rear triangle):

FRONT DERAILLEUR MOUNT:

FORK (if applicable)

Steerer diameter:

Crown type:

Axle to crown distance:

Maximum tire width:

Front axle width:

Front axle type:

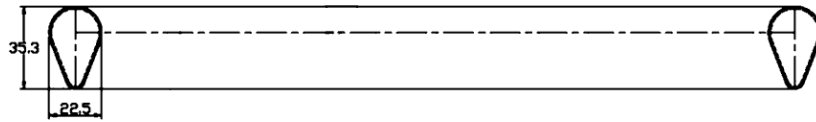
Brake type:

Rack eyelets

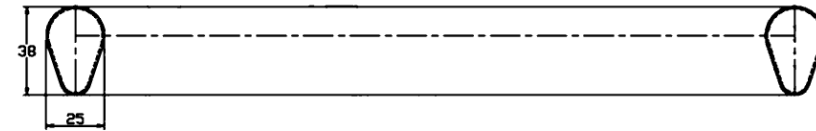
Fender eyelets

Water bottle/Anything Cage bosses

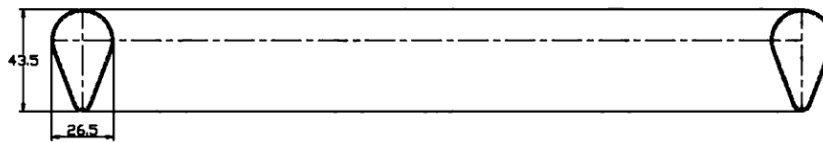
STANDARD DOWN AND SEAT TUBES



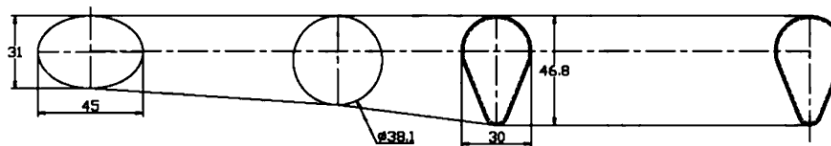
35x22mm teardrop



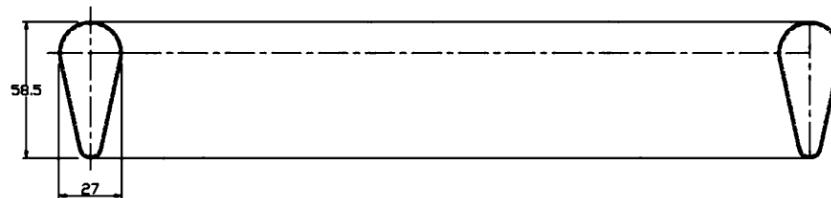
38x25mm teardrop



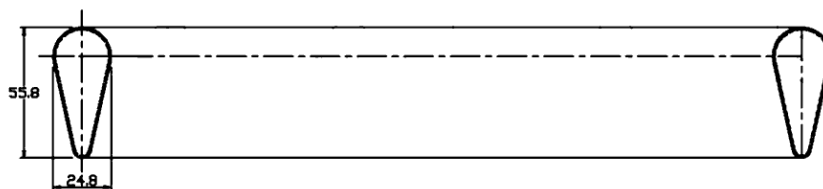
44x26mm teardrop



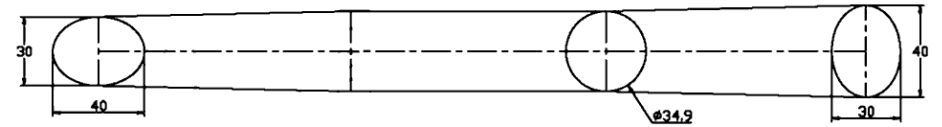
44mm teardrop to laterally ovalized seat tube



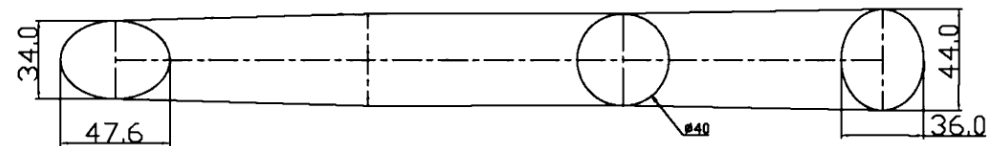
50x27mm teardrop



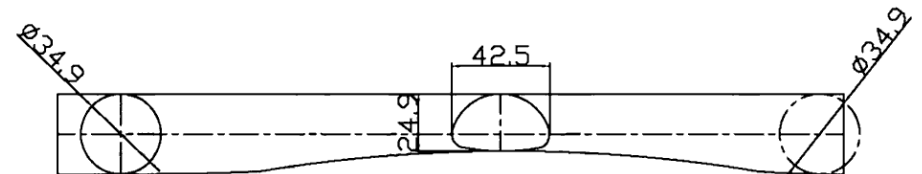
56x25mm teardrop



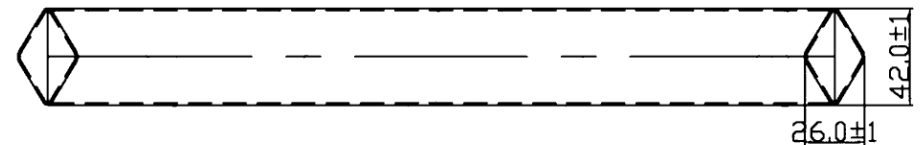
40mm biaxially ovalized



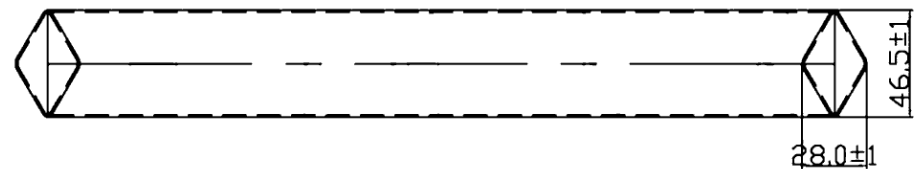
44mm biaxially ovalized



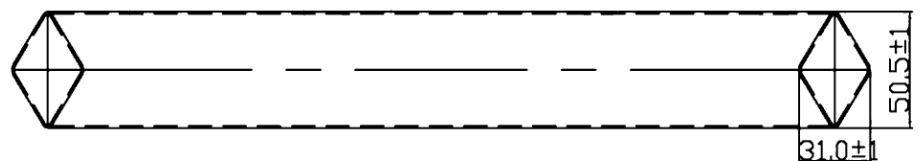
Scalloped 35mm round seat tube



42x26mm diamond

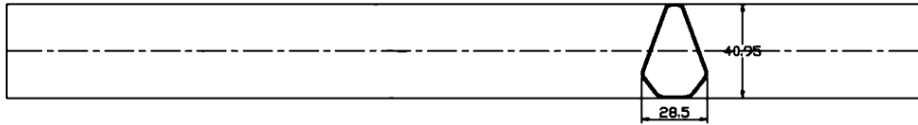


46x28mm diamond

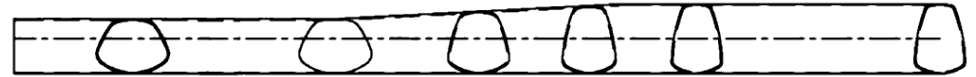


50x31mm diamond

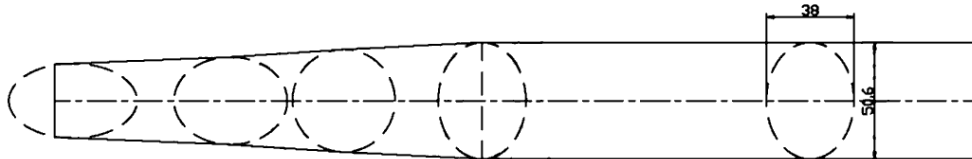
HYDROFORMED DOWN TUBES



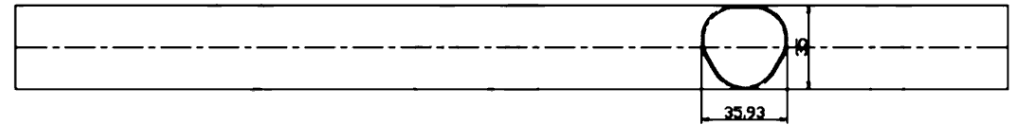
Hexagonal



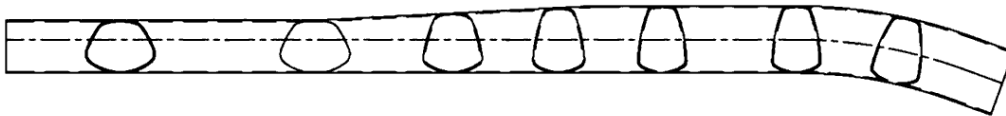
Bell shape, laterally widened at bottom bracket



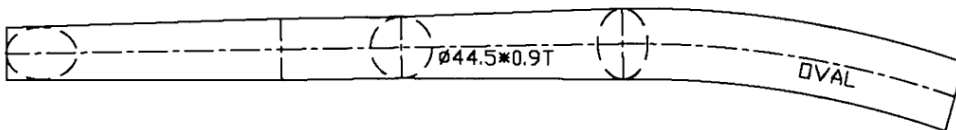
51x38mm biaxially ovalized



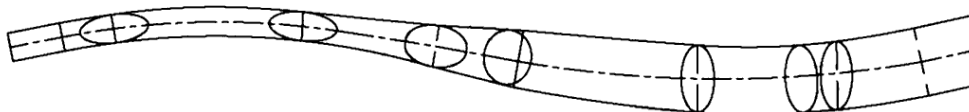
35mm inverted pear shape



Bell shape, laterally widened at bottom bracket
curved at head tube

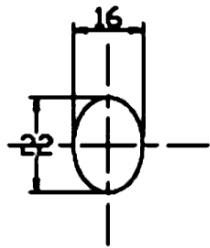


Biaxially ovalized, curved at head tube

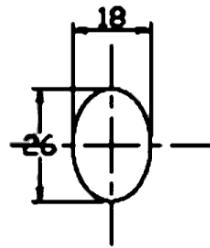


Biaxially ovalized, wave style (for retro frames)

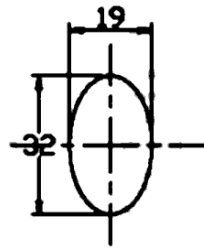
OVAL TUBING



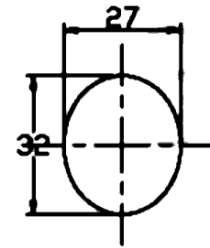
Ø19 □VAL



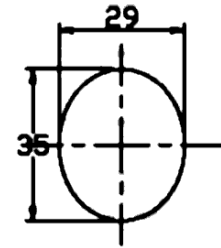
Ø22.2 □VAL



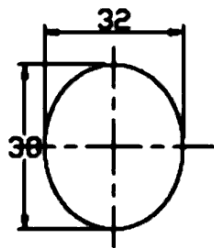
Ø25.4 □VAL



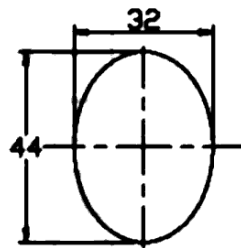
Ø28.6 □VAL



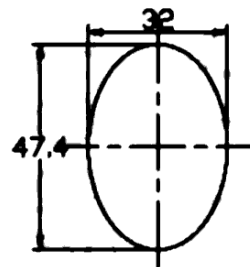
Ø31.8 □VAL



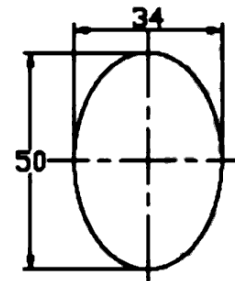
Ø34.9 □VAL



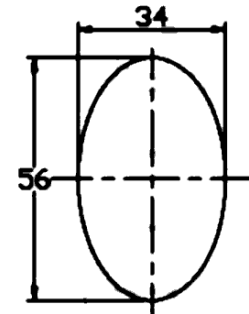
Ø38.1 □VAL



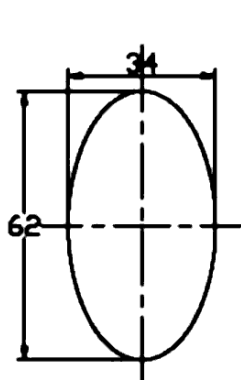
Ø40 □VAL



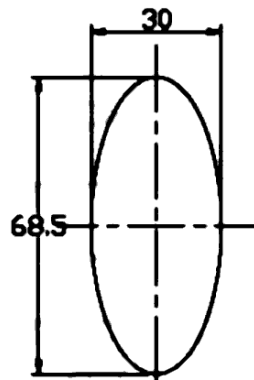
Ø42 □VAL



Ø44.5 □VAL



Ø48 □VAL



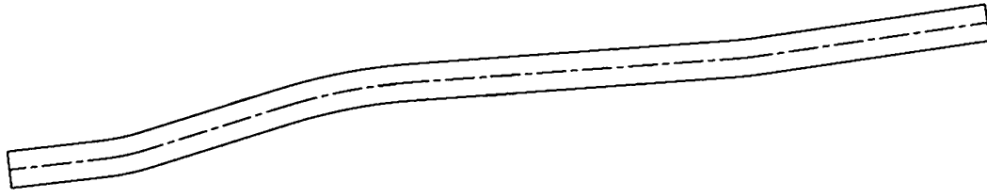
Ø50.8 □VAL

ROUND TUBING

14mm	26.8mm	33mm	42mm
16mm	27.2mm	34.9mm	44.5mm
19mm	28.6mm	36mm	48mm
22.2mm	29.8mm	38.1mm	50.8mm
25.4mm	31.8mm	40mm	

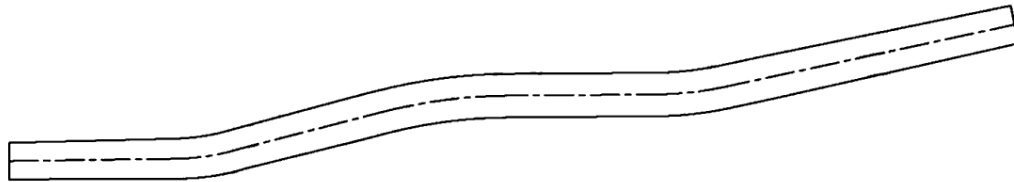
SEAT STAYS

TAPER $\phi 16 \times 150L$ $\phi 19 \times 0.9T$ $\phi 22 \times 16$ $\phi 16 \times 150L$



22x16mm oval tapered to 16mm round

TAPER $\phi 16 \times 150L$ $\phi 19 \times 0.9T$ $\phi 16 \times 150L$



19mm round tapered to 16, both ends

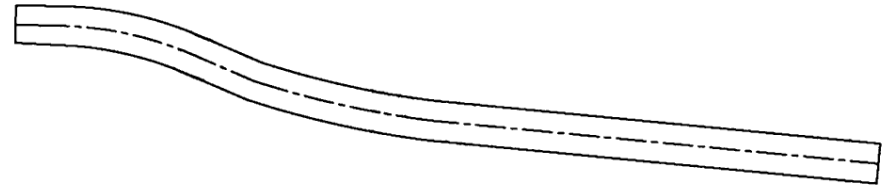
$\phi 19 \times 0.9T$ $\phi 14 \times 180MM$



**19mm round tapered to 14mm
recommended for lightweight riders only**

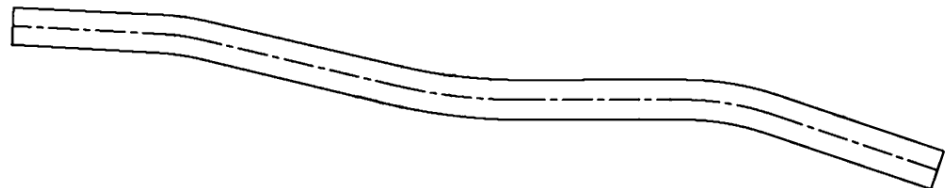
CHAIN STAYS

TAPER $\phi 16 \times 180L$ $\phi 22.2 \times 0.9T$ $\phi 27 \times 17$



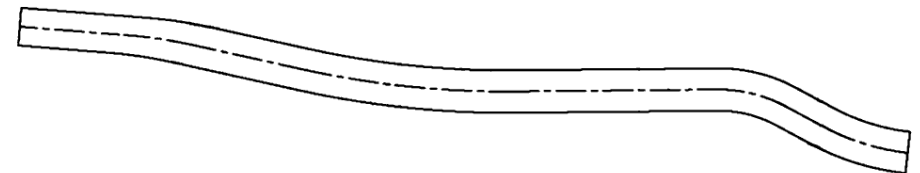
**27x17 oval tapered to 16mm round
single bend**

TAPER $\phi 16 \times 180L$ $\phi 22.2 \times 0.9T$ $\phi 27 \times 17$



**27x17 oval tapered to 16 round
double bend**

TAPER $\phi 16 \times 240L$ $\phi 25.4 \times 0.9T$ $\phi 32 \times 18.2$



32x18mm oval tapered to 16 round